



WELCOME TO THE WORLD OF **SHE** PROFESSIONALS



SHE *hair professional extensions*

SHE company is widely recognized as an industry leader for providing state-of-the-art technology, advanced application techniques and superior products in the extension market.

Since 1995, SHE company has been one of the market-leading suppliers of hair professionals, thanks to the excellent quality of its products which has guaranteed its success over the years. The company offers a variety of hair extension application systems using only 100% natural hair. SHE is pleased to present techniques of Rooted, Balayage, Ombre and Shatush colors which offer countless combinations and the freedom of creativity for every professional.

Become part of the SHE world and you will feel like a star – with the SHE products you will see the difference!

she[®]
PROFESSIONALS

NATURAL COLORS
AVAILABLE IN 44 COLORS



1B			2
1N			chocolate
3			4
5			6
7			8
10			12
14			15
16			17
18			19
20			22
23			24
25			26
27			28
32			33
35			59
60			61
72			73
74			101
103			112
130			140
516			1000
1001			DB3

BALAYAGE COLORS
AVAILABLE IN 15 COLORS



B2/6			B4/8
B4/17			B6/12
B6/27			B8/26
B10/DB2			B12/26
B14/1001			B15/516
B17/20			B18/24
B18/60			B32/130
BDB3/20			

SHATUSH COLORS
AVAILABLE IN 15 COLORS



T2/60			T2/61
T4/17			T6/12
T6/27			T8/26
T10/DB2			T12/26
T14/1001			T15/516
T17/20			T18/24
T18/60			TDB3/20
T32/130			

OMBRE COLORS
AVAILABLE IN 14 COLORS



O1B/2/4			O2/6/15
O4/6/27			O4/8/10
O6/12/27			O8/14/19
O8/14/1001			O15/103/59
O16/15/25			O17/27/DB3
O19/24/23			O27/19/26
O32/33/72			O103/60/516

ROOTED COLORS
AVAILABLE IN 27 COLORS



R2/6			R2/61
R2/63			R4/8
R4/10			R4/17
R4/32			R6/12
R6/27			R8/14
R8/16			R10/15
R10/DB2			R12/26
R14/1001			R15/516
R15/DB3			R17/20
R18/24			R18/60
R19/25			R32/130
R32/33			R32/35
R32/74			R33/72
R33/73			



SHE hair professional **fashion tape** extensions

/ latest application technique available on the market today

/ Fashion Tape's technology is the latest trend in the hair extension market – and easy to learn

/ full head of extensions in just a few minutes with flawless results

/ color-effects for endless creative possibilities



FASHION TAPE **basic**

Pack: 10 pcs per pack

Weight: 7-8 g per pack

Apply: tape



FASHION TAPE **structure & length**

Straight hair: 40/50 cm

FASHION TAPE **colors**



NATURAL



ROOTED



OMBRE



BALAYAGE





40/50 CM - STRAIGHT HAIR

ART.NR: 60154 (FTX1011)

COLORS: chocolate, 1B, 1N, 2, 3, 4, 5, 6, 7, 8, 10, 12, 14, 15, 16, 17, 18,19, 20, 22, 23, 24, 25, 26, 27, 28, 32, 35, 59, 60, 61, 72, 73, 74, 101, 103, 112, 130, 140, 516, 1000, 1001, DB3, DB4.



40/50 CM - STRAIGHT HAIR

ART.NR: 60169 (FXT1031)

COLORS: R2/6, R2/61, R4/8, R4/10, R4/17, R6/12, R6/27, R8/14, R8/16, R10/15, R10/DB2, R12/26, R14/1001, R15/516, R15/DB3, R17/20, R18/24, R18/60, R19/25.



40/50 CM - STRAIGHT HAIR

ART.NR: 60167 (FTX1027)

COLORS: O1B/2/4, O2/6/15, O4/8/10, O4/6/27, O6/12/27, O8/14/19, O8/14/1001, O15/103/59, O16/15/25, O17/27/DB3, O19/24/23, O27/19/26, O32/33/72, O103/60/51.



40/50 CM - STRAIGHT HAIR

ART.NR: 60168 (FTX1023)

COLORS: B2/61, B4/8, B4/17, B6/12, B6/27, B8/26, B10/DB2,B12/26, B14/1001, B15/516, B17/20, B18/24, B18/60, B32/130, BDB3/20.

SHE hair professional **keratin** extensions

/ comes in three different structures

/ you can separate the keratine base, to create smaller pieces

/ you can create any hairstyle you wish, which gives
maximal flexibility for the customer



KERATIN SYSTEM **info**

Pack: 10 pcs per pack

Weight: 7-8 g per pack

Apply: tool to apply keratin extensions



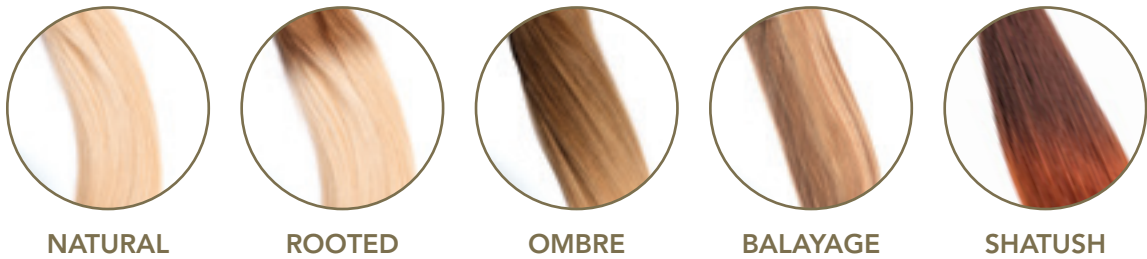
KERATIN SYSTEM **structure & length**

Straight: 30/40 cm, 50/55 cm, 60/65 cm

Wavy: 50/55 cm

Curly: 50/55 cm

KERATIN SYSTEM **colors**





30/40 CM - STRAIGHT HAIR
ART.NR: 60138 (SHE 8001LC)

COLORS: 1B, 1N, 2, 4, 6, 8, 10, 12, 14, 15, 16, 17, 18, 19, 20, 23, 24, 25, 26, 27, 28, 29, 30, 32, 33, 35, 59, 60, 61, 72, 73, 74, 101, 112, 140, 516, 530, 1000, 1001, DB3, 2/17, 6/12, 6/27, 8/26, 12/26, 14/1001, 18/24, 32/130, 20/27, 33/21.

50/55 CM - STRAIGHT HAIR
ART.NR: 60135 (SHE 8000L)

COLORS: chocolate, 1B, 1N, 2, 3, 4, 5, 6, 7, 8, 10, 12, 14, 15, 16, 17, 18, 19, 20, 22, 23, 24, 25, 26, 27, 28, 29, 30, 32, 33, 35, 59, 60, 61, 72, 73, 74, 101, 112, 140, 516, 530, 1000, 1001, DB3, 8/26, 2/17, 6/12, 6/27, 12/26, 14/1001, 18/24, 32/130, 20/27, 33/21.

60/65 CM - STRAIGHT HAIR
ART.NR: 60139 (SHE 8010XXL)

COLORS: 1B, 2, 4, 6, 8, 12, 17, 20, 26, 27, 32, 33, 35, 130, 1001.

50/55 CM - WAVY HAIR
ART.NR: 60136 (SHE 8002M)

COLORS: 1B, 2, 4, 6, 8, 10, 12, 14, 15, 16, 17, 19, 20, 23, 24, 25, 26, 27, 28, 29, 30, 32, 33, 35, 59, 60, 61, 101, 140, 516, 530, 1000, 1001, DB3, 2/17, 6/12, 6/27, 8/26, 12/26, 14/1001, 18/24, 20/27, 32/130, 33/21.

50/55 CM - CURLY HAIR
ART.NR: 60137 (SHE 8004R)

COLORS: 1B, 2, 4, 6, 8, 10, 12, 14, 15, 16, 17, 19, 20, 24, 25, 26, 27, 28, 30, 32, 33, 35, DB3, 1001.



50/55 CM - STRAIGHT HAIR
ART.NR: 60178 (SHE 8022OL)

COLORS: O1B/2/4, O2/16/15, O4/6/27, O6/12/27, O8/14/19, O8/14/1001, O15/103/59, O19/24/23, O27/19/26, O32/33/72, O32/33/130, O103/60/516.



50/55 CM - STRAIGHT HAIR
ART.NR: 60177 (SHE 8012B)

COLORS: B2/6, B2/60, B2/61, B4/8, B4/17, B6/12, B6/27, B8/26, B10/DB2, B12/26, B14/1001, B15/516, B17/20, B18/24, B18/60, B27/20, B32/130B133/20.



50/55 CM - STRAIGHT HAIR
ART.NR: 60122 (SHE 8007D)

COLORS: T2/60, T2/61, T4/17, T6/12, T6/27, T8/26, T10/DB2, T12/26, T14/1001, T15/516, T17/20, T18/24, T18/60, T32/130.



50/55 CM - STRAIGHT HAIR
ART.NR: 60179 (SHE 8018RL)

COLORS: R2/6, R2/61, R2/63, R4/8, R4/17, R4/32, R6/12, R6/27, R8/14, R8/16, R10/15, R10/DB2, R12/26, R14/1001, R15/516, R15/DB3, R16/19, R16/DB4, R17/20, R18/24, R32/130, R32/33, R32/35, R32/74, R33/72, R33/73.

SHE hair professional **clip-in** extensions

/ creates a quick and easy change in length and volume

/ use only a few pieces for a color effect

/ an easy system without permanent attachement

/ you can create any hairstyle you wish, which gives maximal flexibility for the customer



CLIP-IN SYSTEM **info**

Pack: see different products

Weight: depending on size

Apply: hairloc clips

For different packages/sizes,
see next page.



CLIP-IN SYSTEM **structure & length**

Straight: 40/45 cm, 45/50 cm 50/55 cm

CLIP-IN SYSTEM **colors**



NATURAL





**40/45 CM - STRAIGHT HAIR
EXTENCLIP**

ART.NR: 60051

CONTAINS: 9 pieces - 1 x 23 cm,
1 x 20 cm, 1 x 16 cm, 2 x 10 cm, 4 x 3 cm.

WEIGHT: 110 g.

COLORS: 1B, 2, 4, 6, 8, 10, 12, 14, 15, 16,
17, 19, 20, 24, 25, 26, 27, 28, 30, 32, 33,
130, 140, 516, DB2, DB3, DB4, 60, 1000,
1001, 8/26, 6/12, 6/27, 12/26, 14/1001,
18/24, 20/27, DB3/20, 32/130.

**40/45 CM - STRAIGHT HAIR
ONE CLIP**

ART.NR: 60162

CONTAINS: 1 piece, 1 x 2,5 cm.

WEIGHT: 5 g.

COLORS: 1B, 2, 4, 6, 8, 14, 17, 20, 24, 25,
27, 1000, 1001.

**45/50 CM - STRAIGHT HAIR
DONNA**

ART.NR: 60053

CONTAINS: 1 piece, 1 x 25 cm,
thread for application.

WEIGHT: 100 g.

COLORS: 1B, 2, 4, 6, 8, 10, 12, 14, 17,
20, 24, 26, 27, 32, 33, 35, 130, 1001, DB3,
8/26, 6/12, 6/27, 12/26, 14/1001, 18/24,
20/27, DB3/20, 32/130.

**50/55 CM - STRAIGHT HAIR
EASY ONE CLIP**

ART.NR: 60160

CONTAINS: 1 piece, 1 x 16 cm.

WEIGHT: 27 g.

COLORS: 1B, 2, 4, 6, 8, 14, 17, 20, 24, 27,
1000, 1001, DB2.

**45/50 CM - STRAIGHT HAIR
EASY LONG HAIR**

ART.NR: 60055

CONTAINS: 5 pieces - 1 x 20 cm,
1 x 18 cm, 1 x 16 cm, 2 x 10 cm.

WEIGHT: 75 g.

COLORS: 1B, 2, 4, 6, 8, 10, 12, 14, 17, 20,
24, 26, 27, 32, 33, 130, DB3, 1001, 6/12,
6/27, 8/26, 12/26, 14/1001, 18/24, 20/27,
32/130, DB3/20.

SHE hair professional **weft system** extensions

/ flexibel application system - using clips, weaving or glue

/ use without application as a complement or to fill out hairstyle

/ cut easily in requested pieces

/ comes in two differents lenghts and structures in a variety of colors



WEFT SYSTEM info

Pack: 1 pcs per pack

Weight: 100 g per pack

Apply: your choice - hairloc, weaving or adhesives

STRAIGHT



WAVY



WEFT SYSTEM **structure & length**

Straight: 30/40 cm, 50/60 cm

Wavy: 50/60 cm

WEFT SYSTEM **colors**



NATURAL



SHATUSH





30/40 CM - STRAIGHT HAIR

ART.NR: 60045

COLORS: 1B, 2, 4, 6, 8, 10, 12, 14, 20, 23, 24, 27, 33, 59, 140, 1001, DB2, DB3, 6/27.

50/60 CM - STRAIGHT HAIR

ART.NR: 60032

COLORS: 1B, 2, 4, 6, 8, 10, 12, 14, 15, 16, 17, 19, 20, 21, 23, 24, 25, 26, 27, 28, 29, 30, 32, 33, 35, 59, 60, 61, 101, 103, 130, 140, 516, 530, 1000, 1001, DB2, DB3, DB4, 18/24, 32/130, 8/26, 14/1001, 12/26, 20/27, 6/27, DB3/20.

50/60 CM - WAVY HAIR

ART.NR: 60040

COLORS: 1B, 2, 4, 6, 8, 10, 12, 14, 15, 16, 17, 19, 20, 21, 23, 24, 25, 26, 27, 28, 29, 30, 32, 33, 35, 59, 60, 61, 101, 103, 130, 140, 516, 530, 1000, 1001, DB2, DB3, DB4, 18/24, 32/130, 8/26, 14/1001, 12/26, 20/27, 6/27, DB3/20.



50/60 CM - STRAIGHT HAIR

ART.NR: 60046

COLORS: T4/17, T6/12, T6/27, T8/26, T10/DB2, T12/26, T14/1001, T17/20, T18/24, T27/20, T32/130.

SHE hair professional **ponytails**



PONYTAIL info

Pack: 1 piece

Apply: use a smal comb

Advice: place it high up, in the neck or on the side. Use the hair piece as it is, braid it, twist it or make a big twist. Depending on what hairstyle you wish.



45/50 CM - STRAIGHT HAIR

DIVA

ART.NR: 72242

100% HUMAN HAIR

COLORS: 2, 4, 6/12, 6, 8, 14/1001, 18/24, 19, 20, 20/27, 24, 25, 1001, DB3/20, 516, 60.



50/55 CM - STRAIGHT HAIR

DEA

ART.NR: 72240

SYNTHETIC HAIR

COLORS: 1B, 2, 4, 6, 8, 10, 20, 22, 25, 32, 4/17, 15/25, 18/24, 20/27, 27/28, 32/130, 614/21.

50/55 CM - WAVY HAIR

JANA

ART.NR: 72241

SYNTHETIC HAIR

COLORS: 1B, 2, 4, 6, 8, 10, 20, 22, 25, 32, 4/17, 15/25, 18/24, 20/27, 27/28, 32/130, 614/21.





1. TAPE REMOVER
ART.NR: 90671

2. CLEAN TAPE
ART.NR: 90672

3. TAPE
Adhesives strips for fashion tape-in basic.
TAPE STRIPS | ART.NR: 90669
SINGLE TAPE STRIPS | ART.NR: 93003

4. BASE 25 | 33.5 x 29 cm
ART.NR: 93008
Base for fashion tape-ins re-use.

5. EASY RAZOR
Black or orange. ART.NR: 93006

6. RZB02 | SPARE BLADES FOR EASY RAZOR
ART.NR: 93007

7. PROFESSIONAL RECTANGULAR BRUSH
ART.NR: 93002
Medium size, Wooden brush.

8. PROFESSIONAL OVAL BRUSH
Wooden brush.
SMALL | ART.NR: 93001
MEDIUM | ART.NR: 93000

9. CAPE FASHION TAPE
ART.NR: 93009



HAIR STYLING
MAGNETICA

ART.NR: 93122

Magnetica, the multifacted beauty must-have designed to meet every need. With its ceramic and tourmaline plate, Magnetica not only achieves flawlessly straight hair, it also allows you to create curls and defined waves with surprising ease. Moreover, thanks to the strategic holes on the top of the plate – these allow heat to distribute evenly through the hair, which not only optimises drying, but also helps preserve the health of your hair. Equipped with the latest PTC heating technology, it heats rapidly, up to a temperature of 230°C. Revolutionise your style with ease and confidence, leaving room for creativity and the expression of your personality.

INFORMATION

Dual Voltage, 110-240V.
PTC heater technology, fast heat up.
Wide tourmaline ceramic heat plates.
Plate size: 95x36 mm.

Adjustable temperatur 80-230°C.
Lockable handle for storage.
60 minute "auto shut off" safety feature.
2.5M 360° degree swivel power cord.



1. TOOL TO APPLY KERATIN

ART.NR: 91083
2. PLASTIC SHIELDS

ART.NR: 92160. Pack of 6 pieces.
3. KERATIN TIPS

ART.NR: 60126. For application of extensions, pack of 25 pcs.
4. PLIER TO REMOVE KERATIN

ART.NR: 92168
5. SCISSOR KERATIN BONDS

ART.NR: 93125
6. WORK BAG

ART.NR: 99030
7. SOLVENT - TO REMOVE KERATIN

SOLGEL 100 ML | ART.NR: 91021

SOLVENT 80 ML | ART.NR: 80047
8. NYLON THREAD WEAVING

ART.NR: 92325

COLORS: blonde, ligh brown, dark brown.
9. NEEDLES WEAVING

ART.NR: 92398. 7 pieces. Different sizes.
10. HAIRLOC - MINI, MIDI AND MAXI

Colors: black, beige and brown.

MAXI 3,2 cm | ART.NR: 92024

MIDI 2,8 cm | ART.NR: 92025

MINI 2 cm | ART.NR: 92026



SHE hair professional color rings

- NATURAL, SHATUSH COLOR RING

ART.NR: 99027

100% natural hair.
- BALAYAGE, ROOTED, OMBRE COLOR RING

ART.NR: 93011

100% natural hair.
- FASHION TAPE COLOR RING

ART.NR: 93007

100% natural hair.



SHE fashion care

/ is a MADE IN ITALY line of high professional cosmetics for hair.
Born as a complement to SHE's extension collections and it is perfect for any use even at home.

/ the elegant design, with the unmistakable Italian style, characterizes the product, which also becomes an excellent complementary selling point for the salon.

/ fashion care products have been designed to give beauty, wellbeing and professionalism.



1. **NOURISHING MOISTURISING SHAMPOO**
250 ML
ART.NR: 83002
Gently cleanses hair, leaving it strong, soft, silky and shiny, for a hairstyle that looks perfect at all times.

2. **RESTRUCTURING REGENERATING MASK**
250 ML
ART.NR: 83003
Nourishes hair deep down and instantly detangles, for a glamorous and radiant look.

3. **INSTANT LEAVE-IN RESTRUCTURER**
150 ML
ART.NR: 83004
Nourishes and eliminates frizz and gives body to even the finest hair. Do not rinse.
4. **NOURISHING MOISTURISING SHAMPOO**
1000 ML
ART.NR: 83005
Gently cleanses hair, leaving it strong, soft, silky and shiny, for a hairstyle that looks perfect at all times.

5. **RESTRUCTURING REGENERATING MASK**
500 ML
ART.NR: 83006
Nourishes hair deep down and instantly detangles, for a glamorous and radiant look.



1. **ARGAN SHAMPOO**
250 ML AND 1000 ML
250 ML | ART.NR: 80861
1000 ML | ART.NR: 80866

2. **ARGAN CONDITIONER**
250 ML AND 500 ML
250 ML | ART.NR: 80862
500 ML | ART.NR: 80867
3. **ARGAN CREAM**
150 ML
ART.NR: 80863

4. **ARGAN OIL**
30 ML AND 100 ML
30 ML | ART.NR: 80864
100 ML | ART.NR: 80868

5. **ARGAN OIL SPRAY**
100 ML
ART.NR: 80865





- 1. 4U SHAMPOO
250 ML
ART.NR: 80850
- 2. 4U CONDITIONER
250 ML
ART.NR: 80851
- 3. 4U EVERYDAY CONDITIONER
125 ML
ART.NR: 80852
- 4. 4U SILK PROTEIN
60 ML
ART.NR: 80856



- 5. SUNRISE SHAMPOO
150 ML
ART.NR: 80970
- 6. SUNRISE MASK
150 ML
ART.NR: 80971
- 7. SUNRISE PROTECTIVE SPRAY
150 ML
ART.NR: 80972
- 8. NO YELLOW SHAMPOO
150 ML
ART.NR: 83008
- 9. NO YELLOW MASK
150 ML
ART.NR: 83007



- 1. FASHION CARE BRUSH
MEDIUM
ART.NR: 93000
- 2. FASHION CARE BRUSH
SMALL
ART.NR: 93001
- 3. EXTENSIONS BRUSH
ART.NR: 92159
- 4. EXTENSIONS BRUSH
ART.NR: 92015
- 5. FASHION CARE BRUSH
ART.NR: 93002



Toupémas
Belgal
by **Aderans**

Carl M. Lundh
CARL M. LUNDH
by **Aderans**



SWEDEN

TOUPÉMA BELGAL
020-36 87 00
toupemabelgal.se

DENMARK

CARL M LUNDH
78 77 05 46
carlmlundh.dk

NORWAY

CARL M LUNDH
219 39 620
carlmlundh.no