



**bshe<sup>®</sup>**

WELCOME TO THE WORLD OF **SHE PROFESSIONALS**





## **SHE** *hair professional extensions*

SHE company is widely recognized as an industry leader for providing state-of-the-art technology, advanced application techniques and superior products in the extension market.

Since 1995 SHE company is the best in the field of hair cosmetics professionals, thanks to the excellent quality of its products that have guaranteed the success over the years. The company offers a variety of hair extension application systems using only 100% natural hair. SHE is pleased to present her new collection: Colors of seduction featuring 102 "color effects". The new techniques of Rooted color, Balayage, Ombre and Shatush give the possibility to countless combinations and free the creativity of every professional.

Become part of the SHE world and you will feel like a star, with SHE products you will see the difference!

**she**<sup>®</sup>  
PROFESSIONALS



SHE COLORS

**natural color** NATURAL COLORS  
AVAILABLE IN 45 COLORS

1B			2	
1N			chocolate	
3			4	
5			6	
7			8	
10			12	
14			15	
16			17	
18			19	
20			22	
23			24	
25			26	
27			28	
32			33	
35			59	
60			61	
63			72	
73			74	
101			103	
112			130	
140			516	
1000			1001	
DB3				


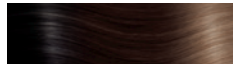


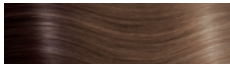









**balayage effect** BALAYAGE COLORS  
AVAILABLE IN 15 COLORS

B2/6			B4/8	
B4/17			B6/12	
B6/27			B8/26	
B10/DB2			B12/26	
B14/1001			B15/516	
B17/20			B18/24	
B18/60			B32/130	
BDB3/20				

**shatush effect** SHATUSH COLORS  
AVAILABLE IN 17 COLORS

T1N/ bordeaux			T2/60	
T2/61			T4/17	
T6/12			T6/27	
T8/26			T10/DB2	
T12/26			T14/1001	
T15/516			T17/20	
T18/24			T18/60	
T27/20			T32/130	
TDB3/20				

**ombre effect** OMBRE COLORS  
AVAILABLE IN 14 COLORS

O1B/2/4			O2/6/15	
O4/6/27			O4/8/10	
O6/12/27			O8/14/19	
O8/14/1001			O15/103/59	
O16/15/25			O17/27/DB3	
O19/24/23			O27/19/26	
O32/33/72			O103/60/516	

**rooted color** ROOTED COLORS  
AVAILABLE IN 27 COLORS

R2/6			R2/61	
R2/63			R4/8	
R4/10			R4/17	
R4/32			R6/12	
R6/27			R8/14	
R8/16			R10/15	
R10/DB2			R12/26	
R14/1001			R15/516	
R15/DB3			R17/20	
R18/24			R18/60	
R19/25			R32/130	
R32/33			R32/35	
R32/74			R33/72	
R33/73				



SHE hair professional **fashion tape** extensions

/ latest application technique available on the market today

/ Fashion Tape’s technology is the latest trend in the hair extension market – and easy to learn

/ full head of extensions in just a few minutes with flawless results

/ color-effects for endless creative possibilities



FASHION TAPE - basic

Pack: 10 pcs per pack

Weight: 7-8 g per pack

Apply: tape



FASHION TAPE - structure and length

Straight hair: 40/50 cm



NATURAL



ROOTED



OMBRE



BALAYAGE







#### 40/50 CM - STRAIGHT HAIR

ART.NR: 60154 (FTX1011)

COLOR: chocolate, 1B, 1N, 2, 3, 4, 5, 6, 7, 8, 10, 12, 14, 15, 16, 17, 18,19, 20, 22, 23, 24, 25, 26, 27, 28, 32, 35, 59, 60, 61, 72, 73, 74, 101, 103, 112, 130, 140, 516, 1000, 1001.



#### 40/50 CM - STRAIGHT HAIR

ART.NR: 60169 (FTX1031)

COLOR: R2/6, R2/61, R4/8, R4/10, R4/17, R6/12, R6/27, R8/14, R8/16, R10/15, R10/DB2, R12/26, R14/1001, R15/516, R15/DB3, R17/20, R18/24, R18/60, R19/25.



#### 40/50 CM - STRAIGHT HAIR

ART.NR: 60167 (FTX1027)

COLOR: O1B/2/4, O2/6/15, O4/8/10, O4/6/27, O6/12/27, O8/14/19, O8/14/1001, O15/103/59, O16/15/25, O17/27/DB3, O19/24/23, O27/19/26, O32/33/72, O103/60/51.



#### 40/50 CM - STRAIGHT HAIR

ART.NR: 60168 (FTX1023)

COLOR: B2/61, B4/8, B4/17, B6/12, B6/27, B8/26, B10/DB2,B12/26, B14/1001, B15/516, B17/20, B18/24, B18/60, B32/130, BDB3/20.



SHE hair professional **keratin system** extensions

/ comes in three different structures

/ you can separate the keratine base, to create smaller pieces

/ you can create any hairstyle you wish, which gives maximal flexibility for the customer



KERATIN SYSTEM - info

**Pack:** 10 pcs per pack

**Weight:** 7-8 g per pack

**Apply:** tool to apply keratine extensions



KERATIN SYSTEM - structure and length

Comes in three different structures - straight, wavy and curly

**Straight:** 30/40 cm, 50/60 cm, 60/70 cm

**Wavy:** 50/60 cm

**Curly:** 50/60 cm

KERATIN SYSTEM - colors



NATURAL



OMBRE



BALAYAGE



SHATUSH



ROOTED







**30/40 CM - STRAIGHT HAIR**

ART.NR: 60138 (SHE 8001LC)

COLOR: 1B, 1N, 2, 4, 6, 8, 10, 12, 14, 15, 16, 17, 18, 19, 20, 22, 23, 24, 25, 26, 27, 28, 29, 30, 32, 33, 35, 59, 60, 61, 63, 72, 73, 74, 101, 112, 140, 516, 530, 1000, 1001, DB3, 2/17, 6/12, 6/27, 8/26, 12/26, 14/1001, 15/516, 18/24, 32/130, 20/27, 33/21.

**50/60 CM - STRAIGHT HAIR**

ART.NR: 60135 (SHE 8000L)

COLOR: chocolate, 1B, 1N, 2, 3, 4, 5, 6, 7, 8, 10, 12, 14, 15, 16, 17, 18, 19, 20, 22, 23, 24, 25, 26, 27, 28, 29, 30, 32, 33, 35, 59, 60, 61, 63, 72, 73, 74, 101, 112, 140, 516, 530, 1000, 1001, DB3, 8/26, 2/17, 6/12, 6/27, 12/26, 14/1001, 15/516, 18/24, 32/130, 20/27, 33/21.

**60/70 CM - STRAIGHT HAIR**

ART.NR: 60139 (SHE 8010XXL)

COLOR: 1B, 2, 4, 6, 8, 12, 17, 20, 26, 27, 32, 33, 35, 130, 1001.

**50/60 CM - WAVY HAIR**

ART.NR: 60136 (SHE 8002M)

COLOR: 1B, 2, 4, 6, 8, 10, 12, 14, 15, 16, 17, 19, 20, 23, 24, 25, 26, 27, 28, 29, 30, 32, 33, 35, 59, 60, 61, 101, 140, 516, 530, 1000, 1001, DB3, 2/17, 6/12, 6/27, 8/26, 12/26, 14/1001, 15/516, 18/24, 20/27, 32/130, 33/21.

**50/60 CM - CURLY HAIR**

ART.NR: 60137 (SHE 8004R)

COLOR: 1B, 2, 4, 6, 8, 10, 12, 14, 15, 16, 17, 19, 20, 24, 25, 26, 27, 28, 30, 32, 33, 35, DB3, 1001.



**50/60 CM - STRAIGHT HAIR**

ART.NR: 60178 (SHE 8022OL)

COLOR: O1B/2/4, O2/16/15, O4/6/27, O6/12/27, O8/14/19, O8/14/1001, O15/103/59, O19/24/23, O27/19/26, O32/33/72, O32/33/130, O103/60/516.



**50/60 CM - STRAIGHT HAIR**

ART.NR: 60177 (SHE 8012B)

COLOR: B2/6, B2/60, B2/61, B4/8, B4/17, B6/12, B6/27, B8/26, B10/DB2, B12/26, B14/1001, B15/516, B17/20, B18/24, B18/60, B27/20, B32/130B133/20.



**50/60 CM - STRAIGHT HAIR**

ART.NR: 60122 (SHE 8007D)

COLOR: T2/60, T2/61, T4/17, T6/12, T6/27, T8/26, T10/DB2, T12/26, T14/1001, T15/516, T17/20, T18/24, T18/60, T32/130.



**50/60 CM - STRAIGHT HAIR**

ART.NR: 60179 (SHE 8018RL)

COLOR: R2/6, R2/61, R2/63, R4/8, R4/17, R4/32, R6/12, R6/27, R8/14, R8/16, R10/15, R10/DB2, R12/26, R14/1001, R15/516, R15/DB3, R16/19, R16/DB4, R17/20, R18/24, R32/130, R32/33, R32/35, R32/74, R33/72, R33/73.



---

## CLIP-IN SYSTEM

### SHE hair professional **clip-in system** extensions

/ creates a quick and easy change in length and volume

/ use only a few pieces for a color effect

/ an easy system without permanent attachment

/ you can create any hairstyle you wish, which gives maximal flexibility for the customer



---

#### CLIP-IN SYSTEM - info

**Pack:** see different products

**Weight:** depending on size

**Apply:** hairloc clips



---

#### CLIP-IN SYSTEM - sizes

Comes in two different lengths and different sizes - see next page

**Straight:** 40/45 cm, 45/50 cm 50/55 cm



NATURAL







**40/45 CM - STRAIGHT HAIR  
EXTENCLIP**

ART.NR: 60051

CONTAINS: 9 pieces - 1 x 23 cm,  
1 x 20 cm, 1 x 16 cm, 2 x 10 cm, 4 x 3 cm.

WEIGHT: 110 g.

COLOR: 1B, 2, 4, 6, 8, 10, 12, 14, 15, 16,  
17, 19, 20, 24, 25, 26, 27, 28, 30, 32, 33,  
130, 140, 516, DB2, DB3, DB4, 60, 1000,  
1001, 8/26, 6/12, 6/27, 12/26, 14/1001,  
18/24, 20/27, DB3/20, 32/130.

**40/45 CM - STRAIGHT HAIR  
ONE CLIP**

ART.NR: 60162

CONTAINS: 1 piece, 1 x 2,5 cm.

WEIGHT: 5 g.

COLOR: 1B, 2, 4, 6, 8, 14, 17, 20, 24,  
25, 27, 1000, 1001.

**45/50 CM - STRAIGHT HAIR  
DONNA**

ART.NR: 60053

CONTAINS: 1 piece, 1 x 16 cm,  
thread for application.

WEIGHT: 100 g.

COLOR: 1B, 2, 4, 6, 8, 10, 12, 14, 17,  
20, 24, 26, 27, 32, 33, 35, 130, 1001,  
DB3, 8/26, 6/12, 6/27, 12/26, 14/1001,  
18/24, 20/27, DB3/20, 32/130.

**50/55 CM - STRAIGHT HAIR  
EASY ONE CLIP**

ART.NR: 60160

CONTAINS: 1 piece, 1 x 16 cm.

WEIGHT: 27 g.

COLOR: 1B, 2, 4, 6, 8, 14, 17, 20, 24,  
27, 1000, 1001, DB2.

**45/50 CM - STRAIGHT HAIR  
EASY LONG HAIR**

ART.NR: 60055

CONTAINS: 5 pieces - 1 x 20 cm,  
1 x 18 cm, 1 x 16 cm, 2 x 10 cm.

WEIGHT: 75 g.

COLOR: 1B, 2, 4, 6, 8, 10, 12, 14, 17,  
20, 24, 26, 27, 32, 33, 130, DB3, 1001,  
6/12, 6/27, 8/26, 12/26, 14/1001,  
18/24, 20/27, 32/130, DB3/20.



CLIP-IN SYSTEM | COLORS



---

## WEFT SYSTEM

### SHE hair professional **weft system** extensions

/ flexibel application system - using clips, weaving or glue

/ use without application as a complement or to fill out hairstyle

/ cut easily in requested pieces

/ comes in two differents lenghts and structures in a variety of colors



---

#### WEFT SYSTEM - info

**Pack:** 1 pcs per pack

**Weight:** 100 g per pack

**Apply:** your choice - hairloc, weaving or adhesives

STRAIGHT



WAVY



---

#### WEFT SYSTEM - structure and lengths

Comes in three different structures - straight and wavy.

**Straight:** 30/40 cm, 50/60 cm

**Wavy:** 50/60 cm



NATURAL



SHATUSH





### 30/40 CM - STRAIGHT HAIR

ART.NR: 60045

COLOR: 1B, 2, 4, 6, 8, 10, 12, 14, 15, 16, 17, 19, 20, 21, 23, 24, 25, 26, 27, 28, 29, 30, 32, 33, 35, 59, 60, 61, 101, 103, 130, 140, 516, 530, 1000, 1001, DB2, DB3, DB4, 8/26, 18/24, 32/130, 20/27, 12/26, 21/130, 1B/530, 14/1001, 2/17, 6/12, 6/27, 32/530, 33/21, DB3/20.

### 50/60 CM - STRAIGHT HAIR

ART.NR: 60032

COLOR: 1B, 2, 4, 6, 8, 10, 12, 14, 15, 16, 17, 19, 20, 21, 23, 24, 25, 26, 27, 28, 29, 30, 32, 33, 35, 59, 60, 61, 101, 103, 130, 140, 516, 530, 1000, 1001, DB2, DB3, DB4, 18/24, 32/130, 8/26, 14/1001, 12/26, 20/27, 6/27, DB3/20.

### 50/60 CM - WAVY HAIR

ART.NR: 60040

COLOR: 1B, 2, 4, 6, 8, 10, 12, 14, 15, 16, 17, 19, 20, 21, 23, 24, 25, 26, 27, 28, 29, 30, 32, 33, 35, 59, 60, 61, 101, 103, 130, 140, 516, 530, 1000, 1001, DB2, DB3, DB4, 18/24, 32/130, 8/26, 14/1001, 12/26, 20/27, 6/27, DB3/20.



### 50/60 CM - STRAIGHT HAIR

ART.NR: 60046

COLOR: T6/12, T6/27, T8/26, T10/DB2, T12/26, T14/1001, T17/20, T18/24, T27/20, T32/130.



PONYTAILS

SHE hair professional ponytails



PONY TAIL - info

**Pack:** 1 piece  
**Apply:** use a smal comb  
**Advice:** place it high up, in the neck or on the side. Use the hair piece as it is, braid it, twist it or make a big twist. Depending on what hairstyle you wish.



DEA - SYNTHETIC - STRAIGHT HAIR

ART.NR: 72240  
LENGTH: 50/55 cm.  
COLOR: 1B, 2, 4, 6, 8, 10, 20, 22, 25, 32, 4/17, 15/25, 18/24, 20/27, 27/28, 32/130, 614/21.



DIVA - 100% NATURAL - STRAIGHT HAIR

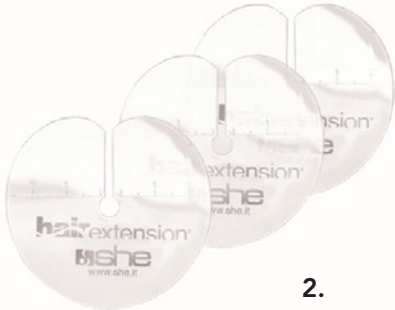
ART.NR: 72242  
LENGTH: 45/50 cm.  
COLOR: 2, 4, 6/12, 6, 8, 14/1001, 18/24, 19, 20, 20/27, 24, 25, 1001, DB3/20, 516, 60.

JANA - SYNTHETIC - WAVY HAIR

ART.NR: 72241  
LENGTH: 50/55 cm.  
COLOR: 1B, 2, 4, 6, 8, 10, 20, 22, 25, 32, 4/17, 15/25, 18/24, 20/27, 27/28, 32/130, 614/21.



1.



2.



3.



4.



5.



6.

WEAVING



7.



8.

1. TOOL TO APPLY KERATIN EXTENSIONS

ART.NR: 91083

2. PLASTIC SHIELDS FOR EXTENSIONS

Pack of 6 pieces.  
ART.NR: 92160

3. KERATIN TIPS

For application of extensions, pack of 25 pcs.  
ART.NR: 60126

4. PLIER TO REMOVE AND APPLY HAIREXTENSIONS

Useful for bothe removal and for applying.  
ART.NR: 92168

5. SOLVENT

To remove keratin extensions.  
**SOLGEL 100 ML** | ART.NR: 91021  
**SOLVENT 80 ML** | ART.NR: 80047

6. WORK BAG

ART.NR: 99030

7. NYLON THREAD

Colors: blonde, lighth brown, dark brown.  
ART.NR: 92325

8. NEEDLES WEAVING

7 pieces. Different sizes.  
ART.NR: 92398

ACCESSORIES



ACCESSORIES

1. HAIRLOC - MINI, MIDI AND MAXI

Colors: black, beige and brown.

**MAXI** 3,2 cm | ART.NR: 92024

**MIDI** 2,8 cm | ART.NR: 92025

**MINI** 2 cm | ART.NR: 92026

2. MINI FLATTENING IRON

To apply tape hair.

ART.NR: 90648

3. TAPE STRIPS

Adhesives strips.

**4 CM** | ART.NR: 90603

**2 CM** | ART.NR: 90664

4. SECTION DISCS

6 pieces.

ART.NR: 90600

5. COLOR RING

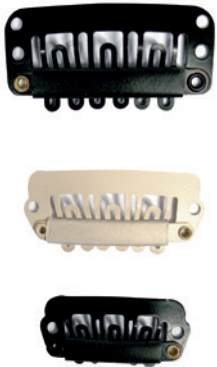
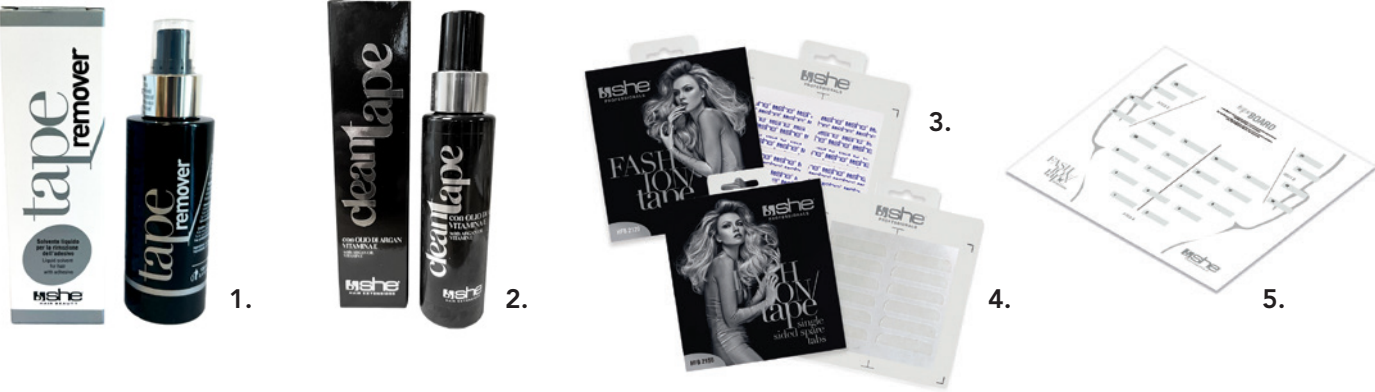
100% natural hair.

ART.NR: 99027

6. HAIR CLIPS

Metal, 24 pieces.

ART.NR: 90607



1. TAPE REMOVER

ART.NR: 90671

2. CLEAN TAPE

ART.NR: 90672

3. TAPE

Adhesives strips for fashion tape-in basic.

ART.NR: 90669

4. SINGLE TAPE

Single adhesives strips for fashion tape-in basic.

ART.NR: 93003

5. BASE 25 | 33,5 x 29 cm

Base for fashion tape-ins re-use.

ART.NR: 93008

6. EASY RAZOR

Black or orange. ART.NR: 93006

7. RZB02 | SPARE BLADES FOR EASY RAZOR

ART.NR: 93007

8. COLOR RING - FASHION TAPE

ART.NR: 93007

9. PROFESSIONAL RECTANGULAR BRUSH

Medium size, Wooden brush.

ART.NR: 93002

10. PROFESSIONAL OVAL BRUSH

Small and Medium, Wooden brush.

**SMALL** | ART.NR: 93001

**MEDIUM** | ART.NR: 93000

11. CAPE FASHION TAPE

ART.NR: 93009





- 1. NOURISHING MOISTURISING SHAMPOO | 250 ML**  
Gently cleanses hair, leaving it strong, soft, silky and shiny, for a hairstyle that looks perfect at all times.  
ART.NR: 83002
- 2. RESTRUCTURING REGENERATING MASK | 250 ML**  
Nourishes hair deep down and instantly detangles, for a glamorous and radiant look.  
ART.NR: 83003
- 3. INSTANT LEAVE-IN RESTRUCTURER | 150 ML**  
Nourishes and eliminates frizz and gives body to even the finest hair. Do not rinse.  
ART.NR: 83004

## SHE fashion care

is a MADE IN ITALY line of high professional cosmetics for hair. Born as a complement to SHE's extension collections and it is perfect for any use even at home.

The elegant design, with the unmistakable Italian style, characterizes the product, which also becomes an excellent complementary selling point for the salon.

FASHION CARE products have been designed to give beauty, wellbeing and professionalism.

Salon products



- 1. NOURISHING MOISTURISING SHAMPOO | 1000 ML**  
ART.NR: 83005
- 2. RESTRUCTURING REGENERATING MASK | 500 ML**  
ART.NR: 83006





HAIR CARE



- 1. 4U SHAMPOO | 250 ML  
ART.NR: 80850
- 2. 4U CONDITIONER | 250 ML  
ART.NR: 80851
- 3. 4U EVERYDAY CONDITIONER | 125 ML  
ART.NR: 80852
- 4. 4U SILK PROTEIN | 60 ML  
ART.NR: 80856

- 5. ARGAN SHAMPOO  
250 ML AND 1000 ML  
250 ML | ART.NR: 80861  
1000 ML | ART.NR: 80866
- 6. ARGAN CONDITIONER  
250 ML AND 500 ML  
250 ML | ART.NR: 80862  
500 ML | ART.NR: 80867



- 7. ARGAN CREAM | 150 ML  
ART.NR: 80863
- 8. ARGAN OIL | 30 ML AND 100 ML  
30 ML | ART.NR: 80864  
100 ML | ART.NR: 80868
- 9. ARGAN OIL SPRAY | 100 ML  
ART.NR: 80865



- 10. SUNRISE SHAMPOO | 150 ML  
ART.NR: 80970
- 11. SUNRISE MASK | 150 ML  
ART.NR: 80971
- 12. SUNRISE PROTECTIVE SPRAY | 150 ML  
ART.NR: 80972



- 1. FASHION CARE BRUSH  
MEDIUM | ART.NR: 93000
- 2. FASHION CARE BRUSH  
SMALL | ART.NR: 93001
- 3. EXTENSIONS BRUSH  
ART.NR: 92159
- 4. EXTENSIONS BRUSH  
ART.NR: 92015
- 5. FASHION CARE BRUSH  
ART.NR: 93002



BRUSHES



Toupémas  
Belgal  
by **Aderans**

Carl M. Lundh  
CARL M. LUNDH  
by **Aderans**



**SWEDEN**

TOUPÉMA BELGAL  
020-36 87 00  
toupemabelgal.se

**DENMARK**

CARL M LUNDH  
78 77 05 46  
carlmlundh.dk

**NORWAY**

CARL M LUNDH  
219 39 620  
carlmlundh.no