



ishe®

WELCOME TO THE WORLD OF **SHE PROFESSIONALS**



SHE *hair professional extensions*

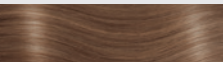
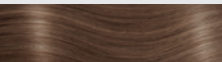
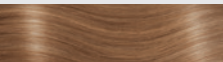

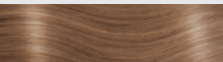
SHE company is widely recognized as an industry leader for providing state-of-the-art technology, advanced application techniques and superior products in the extension market.

Since 1995 SHE company is the best in the field of hair cosmetics professionals, thanks to the excellent quality of its products that have guaranteed the success over the years. The company offers a variety of hair extension application systems using only 100% natural hair. SHE is pleased to present her new collection: Colors of seduction featuring 102 "color effects". The new techniques of Rooted color, Balayage, Ombre and Shatush give the possibility to countless combinations and free the creativity of every professional.

Become part of the SHE world and you will feel like a star, with SHE products you will see the difference!

she[®]
PROFESSIONALS

natural color NATURAL COLORS
AVAILABLE IN 45 COLORS

1B			2
1N			choc- olate
3			4
5			6
7			8
10			12
14			15
16			17
18			19
20			22
23			24
25			26
27			28
32			33
35			59
60			61
63			72
73			74
101			103
112			130
140			516
1000			1001
DB3			

balayage effect BALAYAGE COLORS
AVAILABLE IN 15 COLORS

B2/6			B4/8
B4/17			B6/12
B6/27			B8/26
B10/DB2			B12/26
B14/1001			B15/516
B17/20			B18/24
B18/60			B32/130
BDB3/20			

ombre effect OMBRE COLORS
AVAILABLE IN 14 COLORS

01B/2/4			02/6/15
04/6/27			04/8/10
06/12/27			08/14/19
08/14/1001			015/103/59
016/15/25			017/27/DB3
019/24/23			027/19/26
032/33/72			0103/60/516

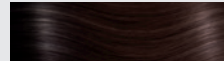



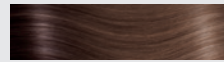
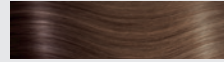
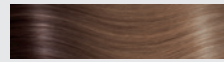
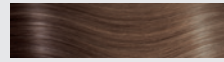

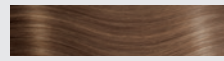


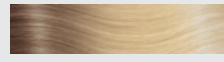
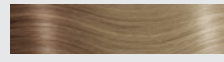



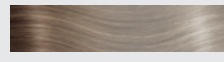

shatush effect SHATUSH COLORS
AVAILABLE IN 17 COLORS

T1N/ bordeaux			T2/60
T2/61			T4/17
T6/12			T6/27
T8/26			T10/DB2
T12/26			T14/1001
T15/516			T17/20
T18/24			T18/60
T27/20			T32/130
TDB3/20			

fantasy color FANTASY COLORS
AVAILABLE IN 24 COLORS

orange			dark orange
guld			yellow
pink			dark pink
lilac			purplish pink
fuxia			dark fuxia
violet			purple
new purple			reddish violet
medium violet			bordeaux
red			dark red
blue			dark blue
turquoise			sky
acid green			dark green

rooted color ROOTED COLORS
AVAILABLE IN 19 COLORS

R2/6	
R2/61	
R4/8	
R4/10	
R4/17	
R6/12	
R6/27	
R8/14	
R8/16	
R10/15	
R10/DB2	
R12/26	
R14/1001	
R15/516	
R15/DB3	
R17/20	
R18/24	
R18/60	
R19/25	

SHE hair professional fashion tape extensions

/ latest application technique available on the market today

/ Fashion Tape's technology is the latest trend in the hair extension market – and easy to learn

/ full head of extensions in just a few minutes with flawless results

/ color-effects for endless creative possibilities



FASHION TAPE - basic

Pack: 10 pcs per pack

Weight: 7-8 g per pack

Apply: tape



FASHION TAPE - structure and length

Straight hair: 45/50 cm

FASHION TAPE - colors



NATURAL



ROOTED



OMBRE



BALAYAGE



FASHION
tape



45/50 CM - STRAIGHT HAIR

art.nr: 60154 (FTX1011)

Color: Chocolate, 1B, 1N, 2, 3, 4, 5, 6, 7, 8, 10, 12, 14, 15, 16, 17, 18, 19, 20, 22, 23, 24, 25, 26, 27, 28, 32, 35, 59, 60, 61, 72, 73, 74, 101, 103, 112, 130, 140, 516, 1000, 1001.



45/50 CM - STRAIGHT HAIR

art.nr: 60169 (FXT1031)

Color: R2/6, R2/61, R4/8, R4/10, R4/17, R6/12, R6/27, R8/14, R8/16, R10/15, R10/DB2, R12/26, R14/1001, R15/516, R15/DB3, R17/20, R18/24, R18/60, R19/25.



45/50 CM - STRAIGHT HAIR

art.nr: 60167 (FTX1027)

Color: O1B/2/4, O2/6/15, O4/8/10, O4/6/27, O6/12/27, O8/14/19, O8/14/1001, O15/103/59, O16/15/25, O17/27/DB3, O19/24/23, O27/19/26, O32/33/72, O103/60/51.



45/50 CM - STRAIGHT HAIR

art.nr: 60168 (FTX1023)

Color: B2/61, B4/8, B4/17, B6/12, B6/27, B8/26, B10/DB2, B12/26, B14/1001, B15/516, B17/20, B18/24, B18/60, B32/130, BDB3/20.

SHE hair professional keratin system extensions

/ comes in three different structures

/ you can separate the keratine base, to create smaller pieces

/ you can create any hairstyle you wish, which gives maximal flexibility for the customer



KERATIN SYSTEM - info

Pack: 10 pcs per pack

Weight: 7-8 g per pack

Apply: tool to apply keratine extensions

STRAIGHT



WAVY



CURLY



KERATIN SYSTEM - structure and length

Comes in three different structures -
straight, wavy and curly

Straight: 40/45 cm, 55/60 cm, 65/70 cm

Wavy: 55/60 cm

Curly: 55/60 cm

KERATIN SYSTEM - colors



NATURAL



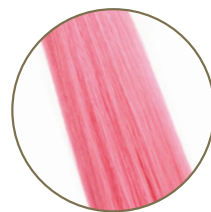
OMBRE



BALAYAGE



SHATUSH



FANTASY



KERATIN SYSTEM – HAIR



40/45 CM - STRAIGHT HAIR

art.nr: 60138 (SHE 8001LC)

Color: 1B, 1N, 2, 4, 6, 8, 10, 12, 14, 15, 16, 17, 18, 19, 20, 22, 23, 24, 25, 26, 27, 28, 29, 30, 32, 33, 35, 59, 60, 61, 63, 72, 73, 74, 101, 112, 140, 516, 530, 1000, 1001, DB3, 2/17, 6/12, 6/27, 8/26, 12/26, 14/1001, 15/516, 18/24, 32/130, 20/27, 33/21.

55/60 CM - STRAIGHT HAIR

art.nr: 60135 (SHE 8000L)

Color: chocolate, 1B, 1N, 2, 3, 4, 5, 6, 7, 8, 10, 12, 14, 15, 16, 17, 18, 19, 20, 22, 23, 24, 25, 26, 27, 28, 29, 30, 32, 33, 35, 59, 60, 61, 63, 72, 73, 74, 101, 112, 140, 516, 530, 1000, 1001, DB3, 8/26, 2/17, 6/12, 6/27, 12/26, 14/1001, 15/516, 18/24, 32/130, 20/27, 33/21.

65/70 CM - STRAIGHT HAIR

art.nr: 60139 (SHE 8010XXL)

Color: 1B, 2, 4, 6, 8, 12, 17, 20, 26, 27, 32, 33, 35, 130, 1001.

55/60 CM - WAVY HAIR

art.nr: 60136 (SHE 8002M)

Color: 1B, 2, 4, 6, 8, 10, 12, 14, 15, 16, 17, 19, 20, 23, 24, 25, 26, 27, 28, 29, 30, 32, 33, 35, 59, 60, 61, 101, 140, 516, 530, 1000, 1001, DB3, 2/17, 6/12, 6/27, 8/26, 12/26, 14/1001, 15/516, 18/24, 20/27, 32/130, 33/21.

55/60 CM - CURLY HAIR

art.nr: 60137 (SHE 8004R)

Color: 1B, 2, 4, 6, 8, 10, 12, 14, 15, 16, 17, 19, 20, 24, 25, 26, 27, 28, 30, 32, 33, 35, DB3, 1001.



55/60 CM - STRAIGHT HAIR

art.nr: 60178 (SHE 8022OL)

Color: O1B/2/4, O2/16/15, O4/6/27, O6/12/27, O8/14/19, O8/14/1001, O15/103/59, O19/24/23, O32/33/72, O103/60/516.



55/60 CM - STRAIGHT HAIR

art.nr: 60177 (SHE 8012B)

Color: B2/6, B4/8, B4/17, B6/12, B6/27, B8/26, B10/DB2, B12/26, B14/1001, B15/516, B18/24, B18/60.



55/60 CM - STRAIGHT HAIR

art.nr: 60122 (SHE 8007D)

Color: T1N/bordeaux, T2/60, T2/61, T4/17, T6/12, T6/27, T8/26, T10/DB2, T12/26, T14/1001, T15/516, T17/20, T18/24, T18/60, T32/130.



55/60 CM - STRAIGHT HAIR

art.nr: 60121 (SHE 8006F)

Color: blue, dark blue, sky, turquoise, acid green, violet, new purple, medium violet, reddish violet, lilac, pink, dark pink, purplish pink, fuxia, dark fuxia, red, dark red, bordeaux.

SHE *hair professional clip-in system extensions*

/ creates a quick and easy change in length and volume

/ use only a few pieces for a color effect

/ an easy system without permanent attachment

/ you can create any hairstyle you wish, which gives maximal flexibility for the customer



CLIP-IN SYSTEM - info

Pack: see different products

Weight: depending on size

Apply: hairloc clips



CLIP-IN SYSTEM - sizes

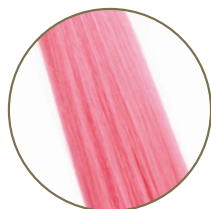
Comes in two different lengths and different sizes - see next page

Straight: 40/45 cm, 50/55 cm

CLIP-IN SYSTEM - colors



NATURAL



FANTASY





**40/45 CM - STRAIGHT HAIR
EXTENCLIP**

art.nr: 60051

Contains: 9 pieces - 1 x 23 cm, 1 x 20 cm, 1 x 16 cm, 2 x 10 cm, 4 x 3 cm.

Weight: 110 g.

Color: 1B, 2, 4, 6, 8, 10, 12, 14, 15, 16, 17, 19, 20, 24, 25, 26, 27, 28, 30, 32, 33, 130, 140, 516, DB2, DB3, DB4, 60, 1000, 1001, 8/26, 6/12, 6/27, 12/26, 14/1001, 18/24, 20/27, DB3/20, 32/130.

**40/45 CM - STRAIGHT HAIR
ONE CLIP**

art.nr: 60162

Contains: 1 piece, 1 x 2,5 cm.

Weight: 5 g.

Color: 1B, 2, 4, 6, 8, 14, 17, 20, 24, 25, 27, 1000, 1001.

**50/55 CM - STRAIGHT HAIR
DONNA**

art.nr: 60053

Contains: 1 piece, 1 x 16 cm, thread for application.

Weight: 100 g.

Color: 1B, 2, 4, 6, 8, 10, 12, 14, 17, 20, 24, 26, 27, 32, 33, 35, 130, 1001, DB3, 8/26, 6/12, 6/27, 12/26, 14/1001, 18/24, 20/27, DB3/20, 32/130.



**50/55 CM - STRAIGHT HAIR
EASY ONE CLIP**

art.nr: 60160

Contains: 1 piece, 1 x 16 cm.

Weight: 27 g.

Color: 1B, 2, 4, 6, 8, 14, 17, 20, 24, 27, 1000, 1001, DB2.

**50/55 CM - STRAIGHT HAIR
EASY LONG HAIR**

art.nr: 60055

Contains: 5 pieces - 1 x 20 cm, 1 x 18 cm, 1 x 16 cm, 2 x 10 cm.

Weight: 75 g.

Color: 1B, 2, 4, 6, 8, 10, 12, 14, 17, 20, 24, 26, 27, 32, 33, 130, DB3, 1001, 6/12, 6/27, 8/26, 12/26, 14/1001, 18/24, 20/27, 32/130, DB3/20.

**40/45 CM - STRAIGHT HAIR
ONE CLIP**

art.nr: 60163

Contains: 1 piece, 1 x 2,5 cm.

Weigth: 5 g.

Color: yellow, orange, dark orange, blue, dark blue, sky, turquoise, acid green, dark green, violet, new purple, medium violet, reddish violet, lilac, pink, dark pink, purplish pink, fuxia, dark fuxia, red, dark red.

SHE *hair professional weft system extensions*

/ flexibel application system - using clips, weaving or glue

/ use without application as a complement or to fill out hairstyle

/ cut easily in requested pieces

/ comes in two differents lenghts and structures in a variety of colors



WEFT SYSTEM - info

Pack: 1 pcs per pack

Weight: 100 g per pack

Apply: your choice - hairloc, weaving or adhesives

STRAIGHT



WAVY



WEFT SYSTEM - structure and lengths

Comes in three different structures - straight, wavy and curly

Straigh: 40/45 cm, 50/60 cm

Wavy: 50/60 cm

WEFT SYSTEM - colors



NATURAL



SHATUSH



weft
hair



40/45 CM - STRAIGHT HAIR

art.nr: 60045

Color: 1B, 2, 4, 6, 8, 10, 12, 14, 15, 16, 17, 19, 20, 21, 23, 24, 25, 26, 27, 28, 29, 30, 32, 33, 35, 59, 60, 61, 101, 103, 130, 140, 516, 530, 1000, 1001, DB2, DB3, DB4, 8/26, 18/24, 32/130, 20/27, 12/26, 21/130, 1B/530, 14/1001, 2/17, 6/12, 6/27, 32/530, 33/21, DB3/20.

50/60 CM - STRAIGHT HAIR

art.nr: 60032

Color: 1B, 2, 4, 6, 8, 10, 12, 14, 15, 16, 17, 19, 20, 21, 23, 24, 25, 26, 27, 28, 29, 30, 32, 33, 35, 59, 60, 61, 101, 103, 130, 140, 516, 530, 1000, 1001, DB2, DB3, DB4, 18/24, 32/130, 8/26, 14/1001, 12/26, 20/27, 6/27, DB3/20.

50/60 CM - WAVY HAIR

art.nr: 60040

Color: 1B, 2, 4, 6, 8, 10, 12, 14, 15, 16, 17, 19, 20, 21, 23, 24, 25, 26, 27, 28, 29, 30, 32, 33, 35, 59, 60, 61, 101, 103, 130, 140, 516, 530, 1000, 1001, DB2, DB3, DB4, 18/24, 32/130, 8/26, 14/1001, 12/26, 20/27, 6/27, DB3/20.



50/60 CM - STRAIGHT HAIR

art.nr: 60046

Color: T6/12, T6/27, T8/26, T10/DB2, T12/26, T14/1001, T17/20, T18/24, T27/20, T32/130.

SHE hair professional tape extensive

/ latest application technique available on the market today

/ Fashion Tape's technology is the latest trend in the hair extension market – and easy to learn

/ full head of extensions in just a few minutes with flawless results

/ color-effects for endless creative possibilities



TAPE EXTENSIVE - info

Pack: 4cm - 4 pieces, 2cm - 8 pieces

Weight: 40/45 cm - 8 g/pcs,

55/60 - 11 g/pcs

Apply: tape



TAPE EXTENSIVE - structure and lengths

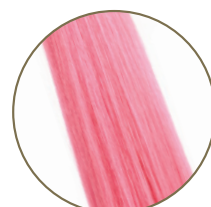
Straight: 40/45 cm, 55/60 cm

Size: 2 cm and 4 cm

TAPE EXTENSIVE - colors



NATURAL



FANTASY



extensive[®]
SIVE



40/45 CM - 8 PIECES X 2 CM

STRAIGHT HAIR

art.nr: 60151

Color: 1B, 2, 4, 6, 8, 10, 12, 14, 15, 16, 17, 19, 20, 21, 24, 25, 26, 27, 28, 29, 30, 32, 33, 35, 60, 101, 103, 130, 516, 530, 1000, 1001, DB2, DB3, DB4, M2 14/1001, M2 18/24, M2 20/27, M2 6/27, M2 32/130.

40/45 CM - 4 PIECES X 4 CM

STRAIGHT HAIR

art.nr: 60147

Color: 1B, 2, 4, 6, 8, 10, 12, 14, 15, 16, 17, 19, 20, 21, 24, 25, 26, 27, 28, 29, 30, 32, 33, 35, 60, 101, 103, 130, 516, 530, DB2, DB3, DB4, 1000, 1001, M4 14/1001, M4 18/24, M4 20/27, M4 32/130, M4 6/27.

55/60 CM - 4 PIECES X 4 CM

STRAIGHT HAIR

art.nr: 60143

Color: 1B, 2, 4, 6, 8, 10, 12, 14, 15, 16, 17, 19, 20, 21, 24, 25, 26, 27, 28, 29, 30, 32, 33, 35, 60, 101, 103, 130, 516, 530, DB2, DB3, DB4, 1000, 1001, M4 14/1001, M4 18/24, M4 20/27, M4 32/130, M4 6/27.



40/45 CM - 4 PIECES X 4 CM

STRAIGHT HAIR

art.nr: 60148

Color: blue, dark blue, sky, fuxia, lilac, new purple, pink, dark pink, puplish pink, red, dark red, turquoise, dark green, medium violet, violet.

55/60 CM - 4 PIECES X 4 CM

STRAIGHT HAIR

art.nr: 60144

Color: orange, blue, dark blue, sky, fuxia, lilac, new purple, pink, dark pink, purplish pink, red, dark red, turquoise, acid green, dark green, violet, medium violet, reddish violet.

SHE hair professional pony tails



PONY TAIL - info

Pack: 1 piece

Apply: use a small comb

Advice: place it high up, in the neck or on the side. Use the hair piece as it is, braid it, twist it or make a big twist.

Depending on what hairstyle you wish.



DEA - SYNTHETIC - STRAIGHT HAIR

art.nr: 72240

Length: 50/55 cm.

Color: 1B, 2, 4, 6, 8, 10, 20, 22, 25, 32, 4/17, 15/25, 18/24, 20/27, 27/28, 32/130, 614/21.



DIVA - 100% NATURAL - STRAIGHT HAIR

art.nr: 72242

Length: 50/55 cm.

Color: 2, 4, 6/12, 6, 8, 14/1001, 18/24, 19, 20, 20/27, 24, 25, 1001, DB3/20, 516, 60.

JANA - SYNTHETIC - WAVY HAIR

art.nr: 72241

Length: 55/60 cm.

Color: 1B, 2, 4, 6, 8, 10, 20, 22, 25, 32, 4/17, 15/25, 18/24, 20/27, 27/28, 32/130, 614/21.



1.



2.



3.



4.



5.



6.



7.



8.



9.

1. TOOL TO APPLY KERATIN EXTENSIONS
art.nr: 91083

2. PLASTIC SHIELDS FOR EXTENSIONS
Pack of 6 pieces.
art.nr: 92160

3. KERATIN TIPS
For application of extensions, pack of 25 pcs.
art.nr: 60126

4. PLIER TO REMOVE AND APPLY HAIREXTENSIONS
Useful for both removal and for applying.
art.nr: 92168

5. SOLVENT
To remove keratin extensions.
SOLGEL 100 ML | art.nr: 91021
SOLVENT 90 ML | art.nr: 80047

6. WORK BAG
art.nr: 99030

7. HAIR HOLDER
art.nr: 92209

8. NYLON THREAD
Colors: blonde, light brown, dark brown.
art.nr: 92325

9. NEEDLES WEAVING
7 pieces. Different sizes.
art.nr: 92398

ACCESSORIES

ACCESSORIES

1. HAIRLOC - MINI, MIDI AND MAXI

Colors: black, beige and brown.

MAXI 3,2 cm | art.nr: 92024

MIDI 2,8 cm | art.nr: 92025

MINI 2 cm | art.nr: 92026
2. MINI FLATTENING IRON

To apply tape hair.

art.nr: 90648
3. TAPE STRIPS

Adhesives strips.

4 CM | art.nr: 90603

2 CM | art.nr: 90664
4. SECTION DISCS

6 pieces.

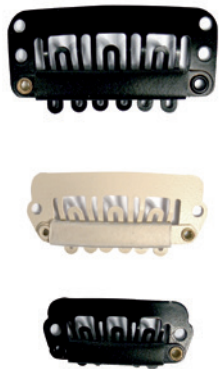
art.nr: 90600
5. COLOR RING

100% natural hair.

art.nr: 99027
6. HAIR CLIPS

Metal, 24 pieces.

art.nr: 90607



1.



2.



3.



4.



5.



6.



1.



2.



4.



5.



7.



10.



8.



9.

1. REMOVER

art.nr: 90671
2. TAPE

Adhesives strips for fashion tape-in basic.

art.nr: 90669
3. SINGLE TAPE

Single adhesives strips for fashion tape-in basic.

art.nr: 93003
4. BASE 25 | 33,5 x 29 cm

Base for fashion tape-ins re-use.

art.nr: 93008
5. EASY RAZOR

Black or orange.

art.nr: 93006
6. RZB02 | SPARE BLADES FOR EASY RAZOR

art.nr: 93007
7. COLOR RING - FASHION TAPE

art.nr: 93007
8. PROFESSIONAL RECTANGULAR BRUSH

Medium size, Wooden brush.

art.nr: 93002
9. PROFESSIONAL OVAL BRUSH

Small and Medium, Wooden brush.

SMALL | art.nr: 93001

MEDIUM | art.nr: 93000
10. CAPE FASHION TAPE

art.nr: 93009



FASHION CARE

is a MADE IN ITALY line of high professional cosmetics for hair. Born as a complement to SHE's extension collections and it is perfect for any use even at home.

The elegant design, with the unmistakable Italian style, characterizes the product, which also becomes an excellent complementary selling point for the salon.

FASHION CARE products have been designed to give beauty, wellbeing and professionalism.



1. NOURISHING MOISTURISING SHAMPOO | 250 ML

Gently cleanses hair, leaving it strong, soft, silky and shiny, for a hairstyle that looks perfect at all times.
art.nr: 83002

2. RESTRUCTURING REGENERATING MASK | 250 ML

Nourishes hair deep down and instantly detangles, for a glamorous and radiant look.
art.nr: 83003

3. INSTANT LEAVE-IN RESTRUCTURER | 150 ML

Nourishes and eliminates frizz and gives body to even the finest hair. Do not rinse.
art.nr: 83004

Salon products



1. NOURISHING MOISTURISING SHAMPOO | 1000 ML

art.nr: 83005

2. RESTRUCTURING REGENERATING MASK | 500 ML

art.nr: 83006



HAIR CARE



- 1. 4U SHAMPO | 250 ML
art.nr: 80850
- 2. 4U CONDITIONER | 250 ML
art.nr:80851
- 3. 4U EVERYDAY CONDITIONER | 125 ML
art.nr: 80852
- 4. 4U SILK PROTEIN | 60 ML
art.nr: 80856



- 5. ARGAN SHAMPOO
250 ML AND 1000 ML
250 ML | art.nr: 80861
1000 ML | art.nr: 80866
- 6. ARGAN CONDITIONER
250 ML AND 500 ML
250 ML | art.nr: 80862
500 ML | art.nr: 80867
- 7. ARGAN CREAM | 150 ML
art.nr: 80863
- 8. ARGAN OIL | 30 ML AND 100 ML
30 ML | art.nr: 80864
100 ML | art.nr: 80868
- 9. ARGAN OIL SPRAY | 100 ML
art.nr: 80865
100 ML | art.nr: 80865



- 1. SHE BRUSH
SMALL | ART.NR: 90630
MEDIUM | ART.NR: 90631
LARGE | ART.NR: 90632
- 2. SHE PADEL BRUSH
ART.NR: 92187
- 3. EXTENSIONS BRUSH
ART.NR: 92159
- 4. EXTENSIONS BRUSH
ART.NR: 92015
- 5. SHE EXTENSIONS BRUSH
SMALL | ART.NR: 92180
LARGE | ART.NR: 92163





BRUSHES





Toupémas
Belgal
by **Aderans**

020-36 87 00 | INFO@TOUPEMABELGAL.SE |  |  | TOUPEMABELGAL.SE | WEBSHOP

Carl M. Lundh
CARL M. LUNDH
by **Aderans**

78 77 05 46 | INFO@CARLMLUNDH.DK |  |  | CARLMLUNDH.DK

Carl M. Lundh
CARL M. LUNDH
by **Aderans**

219 39 620 | INFO@CARLMLUNDH.NO |  |  | CARLMLUNDH.NO